

\$228,900 - 2 1440 Sherwood Drive, Sherwood Park

MLS® #E4424114

\$228,900

2 Bedroom, 1.50 Bathroom, 537 sqft

Condo / Townhouse on 0.00 Acres

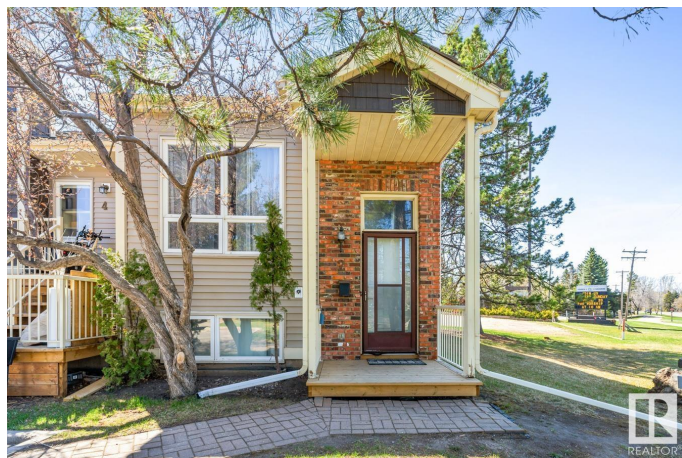
Sherwood Heights, Sherwood Park, AB

Summa Glen offers an awesome central location, 2 parking stalls, 968 Sqft, 2 bedrooms, 1.5 baths plus NEW WINDOWS, DECK & FURNACE. The main level offers hardwood flooring & vaulted ceilings throughout. The kitchen offers updated countertops, oak cabinets & newer fridge. Dining area & living room with wood fireplace & access to the deck. The guest bath complements the layout. NEW carpet takes you down, where you will find a king sized primary bedroom with walk in closet & access to the private patio. The second bedroom is also generous in size. 4pc bath with updated vanity, laundry & storage compliment this well maintained home. Steps away from Broadmoor Park, Kinsman Leisure Centre, Festival Place, Broadmoor Golf Course, Sherwood Park Mall & a variety of dining & shopping options.

Built in 1983

Essential Information

MLS® #	E4424114
Price	\$228,900
Bedrooms	2
Bathrooms	1.50
Full Baths	1
Half Baths	1



Square Footage	537
Acres	0.00
Year Built	1983
Type	Condo / Townhouse
Sub-Type	Townhouse
Style	Bi-Level
Status	Active

Community Information

Address	2 1440 Sherwood Drive
Area	Sherwood Park
Subdivision	Sherwood Heights
City	Sherwood Park
County	ALBERTA
Province	AB
Postal Code	T8A 4W3

Amenities

Amenities	Deck, Patio
Parking	Stall

Interior

Appliances	Dishwasher-Built-In, Dryer, Microwave Hood Fan, Refrigerator, Stove-Electric, Washer, Window Coverings
Heating	Forced Air-1, Natural Gas
Fireplace	Yes
Fireplaces	Tile Surround
Stories	2
Has Basement	Yes
Basement	Full, Finished

Exterior

Exterior	Wood, Brick, Vinyl
Exterior Features	Landscaped, Playground Nearby, Schools
Roof	Asphalt Shingles
Construction	Wood, Brick, Vinyl
Foundation	Concrete Perimeter

Additional Information

Date Listed	March 5th, 2025
Days on Market	59
Zoning	Zone 25
Condo Fee	\$366

DATA IS DEEMED RELIABLE BUT IS NOT GUARANTEED ACCURATE BY THE REALTORS® ASSOCIATION OF EDMONTON. COPYRIGHT 2025 BY THE REALTORS® ASSOCIATION OF EDMONTON. ALL RIGHTS RESERVED. Trademarks are owned or controlled by the Canadian Real Estate Association (CREA) and identify real estate professionals who are members of CREA (REALTOR®, REALTORS®) and/or the quality of services they provide (MLS®, Multiple Listing Service®)

Listing information last updated on May 3rd, 2025 at 5:32am MDT