

\$449,900 - 2043 49a Street, Edmonton

MLS® #E4425689

\$449,900

5 Bedroom, 2.50 Bathroom, 1,049 sqft

Single Family on 0.00 Acres

Pollard Meadows, Edmonton, AB

Welcome to this charming four-level split home in the desirable Pollard Meadows community! Located within walking distance of Millwood's Town Centre, and just minutes away from Grey Nuns Hospital, the LRT station, and the Anthony Henday. This spacious home offers 3 bedrooms and 1.5 bathrooms on the upper level. The main floor features a bright living room, formal dining area, and a large Maple kitchen with ample cabinet and counter space. The kitchen also has a side entrance that leads to the backyard. The separate basement entrance opens up to a large living room and a brand-new kitchen. A few steps down leads you to 2 additional bedrooms and a full bathroom, perfect for guests or extended family. The property boasts a beautifully landscaped front and back yard, with mature trees, a fire pit, and a generously-sized deck—ideal for outdoor living. The lot size over 5,600 sqft, offering plenty of space for gardening or recreation. Don't miss the opportunity to call this wonderful property you.

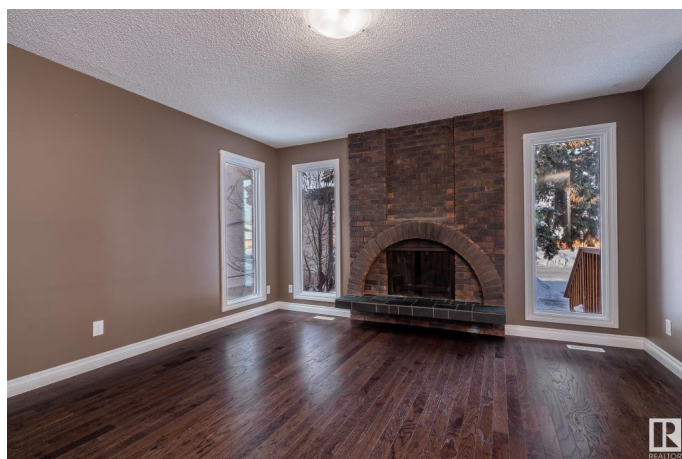
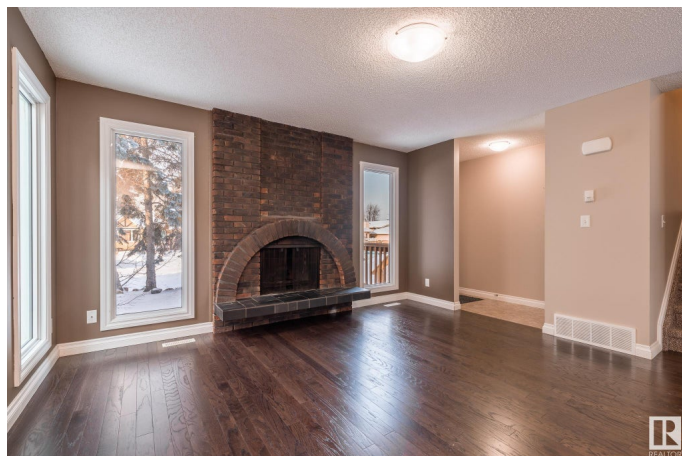
Built in 1979

Essential Information

MLS® # E4425689

Price \$449,900

Bedrooms 5



Bathrooms	2.50
Full Baths	2
Half Baths	1
Square Footage	1,049
Acres	0.00
Year Built	1979
Type	Single Family
Sub-Type	Detached Single Family
Style	4 Level Split
Status	Active

Community Information

Address	2043 49a Street
Area	Edmonton
Subdivision	Pollard Meadows
City	Edmonton
County	ALBERTA
Province	AB
Postal Code	T6L 2W9

Amenities

Amenities	Deck, Fire Pit
Parking	Front Drive Access

Interior

Interior Features	ensuite bathroom
Appliances	Dishwasher-Built-In, Dryer, Microwave Hood Fan, Washer, Refrigerators-Two, Stoves-Two
Heating	Forced Air-1, Natural Gas
Stories	4
Has Basement	Yes
Basement	Full, Finished

Exterior

Exterior	Wood, Vinyl
Exterior Features	Fenced, Landscaped, Playground Nearby, Public Transportation, Schools, Shopping Nearby
Roof	Asphalt Shingles
Construction	Wood, Vinyl

Foundation Concrete Perimeter

Additional Information

Date Listed March 14th, 2025

Days on Market 50

Zoning Zone 29

DATA IS DEEMED RELIABLE BUT IS NOT GUARANTEED ACCURATE BY THE REALTORS® ASSOCIATION OF EDMONTON. COPYRIGHT 2025 BY THE REALTORS® ASSOCIATION OF EDMONTON. ALL RIGHTS RESERVED.Trademarks are owned or controlled by the Canadian Real Estate Association (CREA) and identify real estate professionals who are members of CREA (REALTOR®, REALTORS®) and/or the quality of services they provide (MLS®, Multiple Listing Service®)

Listing information last updated on May 3rd, 2025 at 7:32am MDT