

Courtesy Of Jeff D Jackson Of Bode

\$664,900 - 7147 182 Avenue, Edmonton

MLS® #E4427820

\$664,900

4 Bedroom, 3.00 Bathroom, 2,561 sqft

Single Family on 0.00 Acres

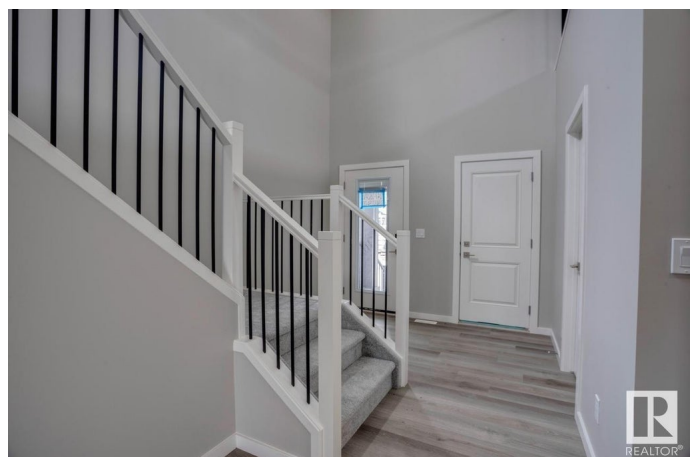
Crystallina Nera East, Edmonton, AB

Welcome to the Remi B model by Bedrock Homes—a modern 4-bedroom, 3-bathroom front drive home offering 2400+ sq ft of stylish, functional space in the desirable Crystallina community. This thoughtfully designed home features an open-to-above foyer leading to an open-concept main floor with a cozy 50" LED electric fireplace, main floor bedroom with full bath, and a gourmet kitchen with 41" upper cabinets, quartz countertops. Upstairs, discover a central bonus room, second-floor laundry, and a primary bedroom complete with a spa-like 5pc ensuite. With a double attached garage, this move-in-ready home is perfect for families looking for a blend of comfort and cutting-edge technology in a great neighborhood with easy access to amenities. SIDE ENTRY and 9' basement ceiling for potential future development!

Built in 2024

Essential Information

MLS® #	E4427820
Price	\$664,900
Bedrooms	4
Bathrooms	3.00
Full Baths	3
Square Footage	2,561
Acres	0.00



Year Built	2024
Type	Single Family
Sub-Type	Detached Single Family
Style	2 Storey
Status	Active

Community Information

Address	7147 182 Avenue
Area	Edmonton
Subdivision	Crystallina Nera East
City	Edmonton
County	ALBERTA
Province	AB
Postal Code	T5Z 0J1

Amenities

Amenities	No Animal Home, No Smoking Home
Parking Spaces	4
Parking	Double Garage Attached

Interior

Interior Features	ensuite bathroom
Appliances	None
Heating	Forced Air-1, Natural Gas
Fireplace	Yes
Fireplaces	Insert
Stories	2
Has Basement	Yes
Basement	Full, Unfinished

Exterior

Exterior	Wood, Stone, Vinyl
Exterior Features	Backs Onto Park/Trees, Park/Reserve, Playground Nearby, Schools, Shopping Nearby
Roof	Asphalt Shingles
Construction	Wood, Stone, Vinyl
Foundation	Concrete Perimeter

Additional Information

Date Listed March 27th, 2025

Days on Market 41

Zoning Zone 28

DATA IS DEEMED RELIABLE BUT IS NOT GUARANTEED ACCURATE BY THE REALTORS® ASSOCIATION OF EDMONTON. COPYRIGHT 2025 BY THE REALTORS® ASSOCIATION OF EDMONTON. ALL RIGHTS RESERVED. Trademarks are owned or controlled by the Canadian Real Estate Association (CREA) and identify real estate professionals who are members of CREA (REALTOR®, REALTORS®) and/or the quality of services they provide (MLS®, Multiple Listing Service®)

Listing information last updated on May 6th, 2025 at 10:47pm MDT