

## \$319,900 - 11915 122 Street, Edmonton

MLS® #E4431311

**\$319,900**

3 Bedroom, 2.00 Bathroom, 738 sqft

Single Family on 0.00 Acres

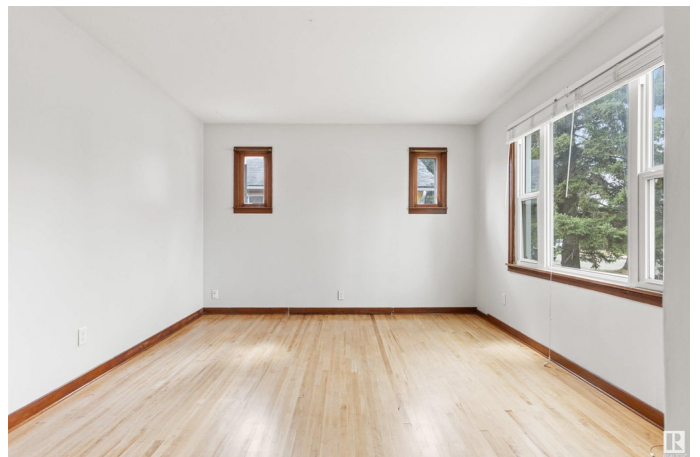
Prince Charles, Edmonton, AB

Look no further! This trendy 737 sq ft, 3 bed, 2 bath bungalow, is situated on a big lot in wonderful community of Prince Charles. Upon entering you'll appreciate the large front window that brings in loads of natural light. Refinished hardwood throughout the main. Youâ€™ll love the spacious eat-in kitchen. The primary bedroom is big enough for a king bed. A 2nd bedroom & a completely remodeled 4pc bath rounds out the main. The fully finished basement features a large rec room & a 3pc bathroom with a stand-up shower. A 3rd bedroom & a laundry/storage room completes the basement. Enjoy BBQ's, entertaining & so much more in the huge backyard. Plenty of options for parking incl space for a future garage. Some upgrades over the years incl vinyl windows, pex water lines, shingles, mid-efficient furnace & more! Just a quick drive to Downtown and walking distance to great schools, parks, and more!

Built in 1949

### Essential Information

MLS® #	E4431311
Price	\$319,900
Bedrooms	3
Bathrooms	2.00
Full Baths	2



Square Footage	738
Acres	0.00
Year Built	1949
Type	Single Family
Sub-Type	Detached Single Family
Style	Bungalow
Status	Active

### Community Information

Address	11915 122 Street
Area	Edmonton
Subdivision	Prince Charles
City	Edmonton
County	ALBERTA
Province	AB
Postal Code	T5L 0C5

### Amenities

Amenities	On Street Parking
Parking Spaces	2
Parking	Front Drive Access, See Remarks

### Interior

Appliances	Dryer, Refrigerator, Stove-Electric, Washer, Window Coverings
Heating	Forced Air-1, Natural Gas
Stories	2
Has Basement	Yes
Basement	Full, Finished

### Exterior

Exterior	Wood, Stucco
Exterior Features	Back Lane, Fenced, Public Transportation, Schools
Roof	Asphalt Shingles
Construction	Wood, Stucco
Foundation	Concrete Perimeter

### Additional Information

Date Listed	April 17th, 2025
Days on Market	16

## Zoning

## Zone 04

DATA IS DEEMED RELIABLE BUT IS NOT GUARANTEED ACCURATE BY THE REALTORS® ASSOCIATION OF EDMONTON. COPYRIGHT 2025 BY THE REALTORS® ASSOCIATION OF EDMONTON. ALL RIGHTS RESERVED. Trademarks are owned or controlled by the Canadian Real Estate Association (CREA) and identify real estate professionals who are members of CREA (REALTOR®, REALTORS®) and/or the quality of services they provide (MLS®, Multiple Listing Service®)

Listing information last updated on May 3rd, 2025 at 4:02am MDT