

\$499,900 - 7215 135a Avenue, Edmonton

MLS® #E4431821

\$499,900

4 Bedroom, 2.50 Bathroom, 1,124 sqft

Single Family on 0.00 Acres

Delwood, Edmonton, AB

FULLY RENOVATED BUNGALOW! This spacious 4 bedroom, 2.5 bath home with IN-LAW SUITE, sits on a large lot in the established neighborhood of Delton.

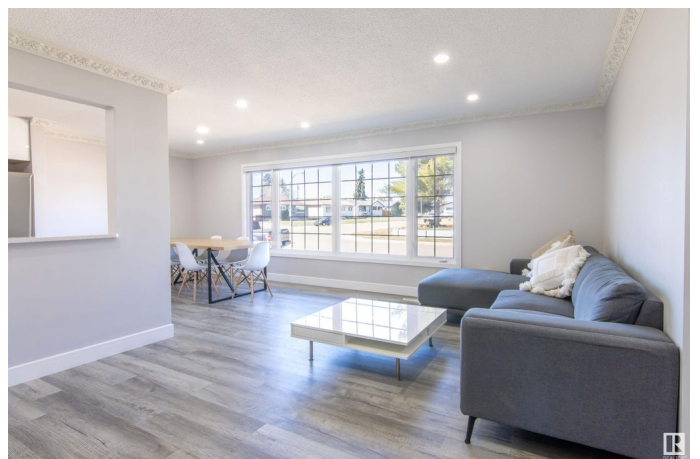
Featuring loads of upgrades included designer lighting, newer windows, exterior, roof, quartz counters, 2 furnaces, 2 sets of laundry and the list goes on! The bright living room has lots of pot lights and a huge picture window allows plenty of natural light. The new kitchen has quality tall white cabinetry, s/s appliances and a breakfast bar overlooks the living room and sunny dining area. There are 3 generous bedrooms with ample closet space, a family bathroom with modern fixtures and fittings and the primary has its own ensuite! The beautifully finished basement has a SEPARATE ENTRANCE with another bedroom, 2nd kitchen, large family room, full bath & its own washer and dryer! The exterior has fantastic curb appeal with a SOUTH facing fenced yard, patio and double garage. Ideally located close to schools, shopping and parks
â€“ AN ABSOLUTE MUST SEE!!!

Built in 1964

Essential Information

MLS® # E4431821

Price \$499,900



Bedrooms	4
Bathrooms	2.50
Full Baths	2
Half Baths	1
Square Footage	1,124
Acres	0.00
Year Built	1964
Type	Single Family
Sub-Type	Detached Single Family
Style	Bungalow
Status	Active

Community Information

Address	7215 135a Avenue
Area	Edmonton
Subdivision	Delwood
City	Edmonton
County	ALBERTA
Province	AB
Postal Code	T5C 2H7

Amenities

Amenities	Detectors Smoke, No Animal Home, No Smoking Home, Patio, See Remarks
Parking Spaces	4
Parking	Double Garage Detached

Interior

Interior Features	ensuite bathroom
Appliances	Hood Fan, Dryer-Two, Refrigerators-Two, Stoves-Two, Washers-Two, Dishwasher-Two
Heating	Forced Air-2, Natural Gas
Stories	2
Has Suite	Yes
Has Basement	Yes
Basement	Full, Finished

Exterior

Exterior	Wood, Stucco
----------	--------------

Exterior Features	Back Lane, Fenced, Flat Site, Landscaped, Playground Nearby, Public Transportation, Schools, Shopping Nearby
Roof	Asphalt Shingles
Construction	Wood, Stucco
Foundation	Concrete Perimeter

Additional Information

Date Listed	April 18th, 2025
Days on Market	14
Zoning	Zone 02

DATA IS DEEMED RELIABLE BUT IS NOT GUARANTEED ACCURATE BY THE REALTORS® ASSOCIATION OF EDMONTON. COPYRIGHT 2025 BY THE REALTORS® ASSOCIATION OF EDMONTON. ALL RIGHTS RESERVED.Trademarks are owned or controlled by the Canadian Real Estate Association (CREA) and identify real estate professionals who are members of CREA (REALTOR®, REALTORS®) and/or the quality of services they provide (MLS®, Multiple Listing Service®)

Listing information last updated on May 2nd, 2025 at 1:32pm MDT