

\$765,000 - 9835 143 Street, Edmonton

MLS® #E4432820

\$765,000

1 Bedroom, 1.00 Bathroom, 1,399 sqft

Single Family on 0.00 Acres

Crestwood, Edmonton, AB

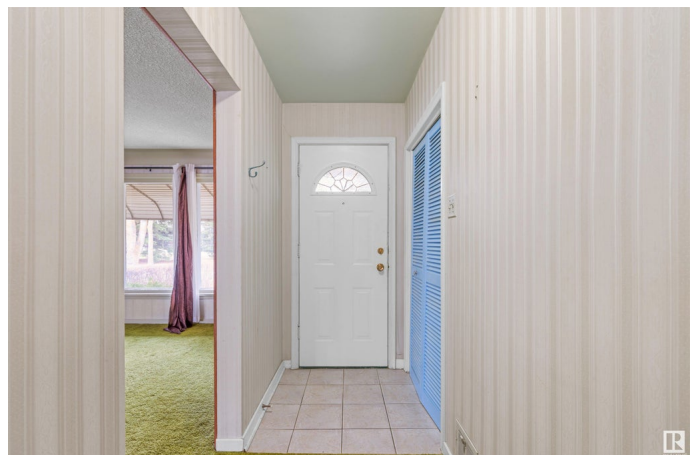
Prime Investment in Prestigious Crestwood
“Tons of potential! Discover the perfect canvas for your next project across from an island park. 1,300 square foot bungalow w/ 3 bedrooms and full bathroom. Enjoy a vibrant community with great schools, L’Oca Market, charming restaurants, cozy coffee shops, and quick access to downtown “all just minutes away. You're conveniently steps away from the Mackinnon Ravine with trails leading to the North Saskatchewan River.

Built in 1954

Essential Information

MLS® #	E4432820
Price	\$765,000
Bedrooms	1
Bathrooms	1.00
Full Baths	1
Square Footage	1,399
Acres	0.00
Year Built	1954
Type	Single Family
Sub-Type	Detached Single Family
Style	Bungalow
Status	Active

Community Information



Address	9835 143 Street
Area	Edmonton
Subdivision	Crestwood
City	Edmonton
County	ALBERTA
Province	AB
Postal Code	T5N 2R4

Amenities

Amenities	See Remarks
Parking	Double Garage Detached

Interior

Appliances	Refrigerator, Stove-Electric
Heating	Forced Air-1, Natural Gas
Stories	2
Has Basement	Yes
Basement	Full, Finished

Exterior

Exterior	Wood, Stucco
Exterior Features	Back Lane, Paved Lane, Playground Nearby, Public Transportation, Schools, Shopping Nearby
Roof	Asphalt Shingles
Construction	Wood, Stucco
Foundation	Concrete Perimeter

School Information

Elementary	Crestwood School
Middle	Crestwood School
High	Ross Shepherd High School

Additional Information

Date Listed	April 25th, 2025
Days on Market	6
Zoning	Zone 10

DATA IS DEEMED RELIABLE BUT IS NOT GUARANTEED ACCURATE BY THE REALTORS® ASSOCIATION OF EDMONTON. COPYRIGHT 2025 BY THE REALTORS® ASSOCIATION OF EDMONTON. ALL RIGHTS RESERVED. Trademarks are owned or controlled by the Canadian Real Estate Association (CREA) and identify real estate professionals who are members of CREA (REALTOR®, REALTORS®) and/or the quality of services they

provide (MLS®®, Multiple Listing Service®®)
Listing information last updated on May 1st, 2025 at 8:47pm MDT