

\$499,000 - 133 Hilton Cove, Spruce Grove

MLS® #E4449535

\$499,000

3 Bedroom, 2.50 Bathroom, 1,709 sqft

Single Family on 0.00 Acres

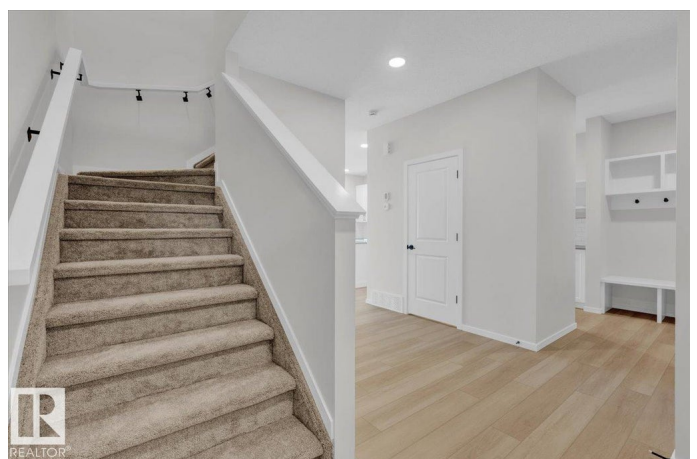
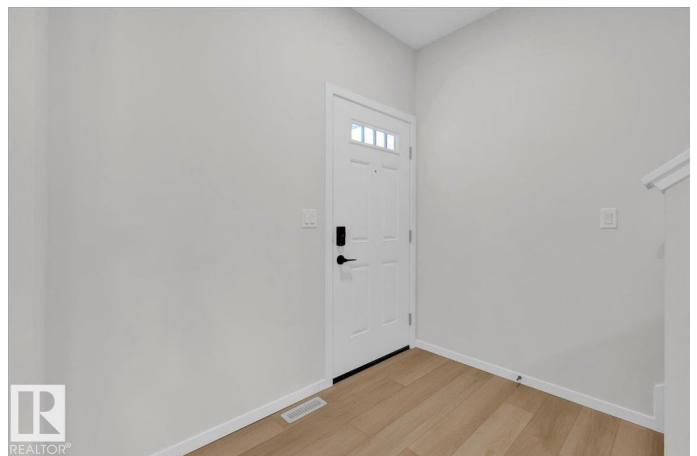
Harvest Ridge, Spruce Grove, AB

5 Things to Love about this new Alquinn Home in Harvest Ridge: 1) Modern Curb Appeal â€“ This stylish new half duplex features a double attached garage with epoxy flooring, a pressure-treated wood deck in the back and is perfectly located in sought-after Harvest Ridge. 2) Bright & Contemporary â€“ Enjoy sleek, modern finishes and a bright, welcoming interior that feels fresh and inviting from the moment you walk in. 3) Smart Layout â€“ The open-concept main floor offers a seamless flow between the kitchen, dining, and living spaces, complete with an electric fireplace and a stunning island with breakfast bar. 4) Thoughtful Details â€“ A walk-through pantry leads to a convenient mudroom with garage access. Upstairs, youâ€™ll find a bonus room, upper laundry, 4pc bath, and two well-sized bedrooms. 5) Private Retreat â€“ The spacious primary suite features a luxurious 5pc ensuite with dual sinks and a walk-in closet. Plus, thereâ€™s a separate side entrance for future flexibility. *Photos are representative*

Built in 2025

Essential Information

MLS® #	E4449535
Price	\$499,000
Bedrooms	3



Bathrooms	2.50
Full Baths	2
Half Baths	1
Square Footage	1,709
Acres	0.00
Year Built	2025
Type	Single Family
Sub-Type	Half Duplex
Style	2 Storey
Status	Active

Community Information

Address	133 Hilton Cove
Area	Spruce Grove
Subdivision	Harvest Ridge
City	Spruce Grove
County	ALBERTA
Province	AB
Postal Code	T7X 1Y4

Amenities

Amenities	Deck, Exterior Walls- 2"x6", No Animal Home, No Smoking Home
Parking	Double Garage Attached

Interior

Interior Features	ensuite bathroom
Appliances	Dishwasher-Built-In, Microwave Hood Fan, Refrigerator, Stove-Electric
Heating	Forced Air-1, Natural Gas
Fireplace	Yes
Fireplaces	Insert
Stories	2
Has Basement	Yes
Basement	Full, Unfinished

Exterior

Exterior	Wood, Vinyl
Exterior Features	Park/Reserve, Playground Nearby, Schools, Shopping Nearby
Roof	Asphalt Shingles
Construction	Wood, Vinyl

Foundation Concrete Perimeter

Additional Information

Date Listed July 24th, 2025

Days on Market 91

Zoning Zone 91

DATA IS DEEMED RELIABLE BUT IS NOT GUARANTEED ACCURATE BY THE REALTORS® ASSOCIATION OF EDMONTON. COPYRIGHT 2025 BY THE REALTORS® ASSOCIATION OF EDMONTON. ALL RIGHTS RESERVED. Trademarks are owned or controlled by the Canadian Real Estate Association (CREA) and identify real estate professionals who are members of CREA (REALTOR®, REALTORS®) and/or the quality of services they provide (MLS®, Multiple Listing Service®)

Listing information last updated on October 23rd, 2025 at 8:02am MDT