

## **\$474,900 - 13924 107a Avenue, Edmonton**

MLS® #E4453695

**\$474,900**

2 Bedroom, 1.00 Bathroom, 1,088 sqft

Single Family on 0.00 Acres

North Glenora, Edmonton, AB

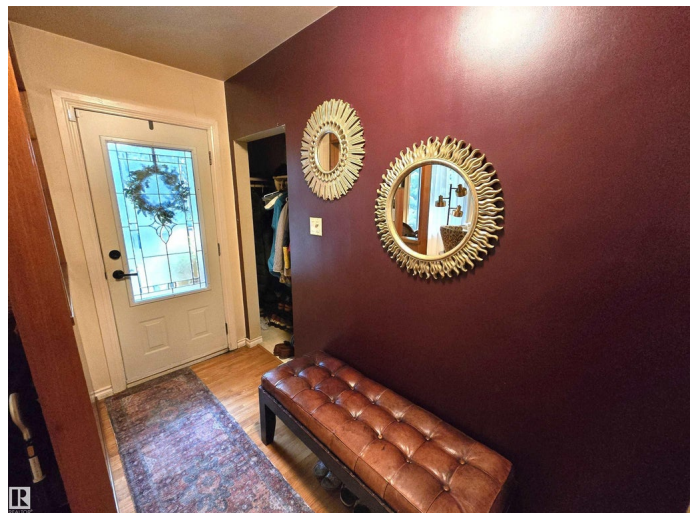
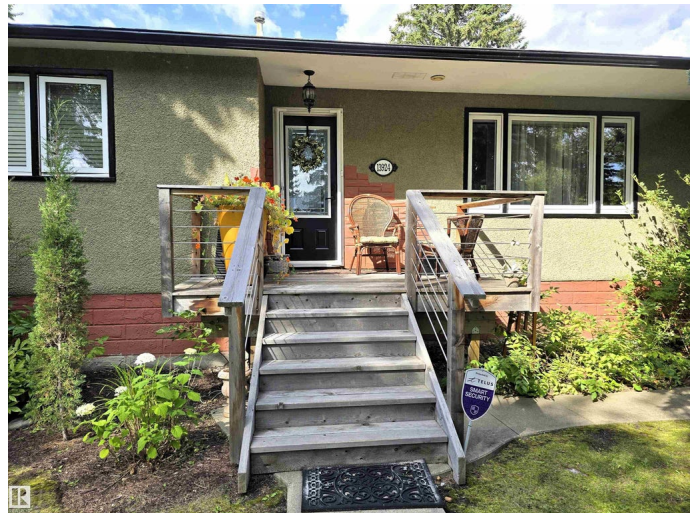
Bright and Airy 2+1 Bedroom Bungalow in North Glenora! Inside, enjoy a spacious living room with electric fireplace, ceiling detail & large window open to the dining room. The kitchen boasts ample counter space & storage, stainless steel appliances, backsplash, large window overlooking the private backyard, & breakfast seating. Spacious Primary bedroom (which can be converted back to 2 bedrooms), a renovated 3-pc bath & an additional bedroom round out the main floor. Additional features include hardwood floors throughout, newer vinyl windows, newer shingles, a partially finished basement with Family Room, Bedroom, & Laundry. The spacious backyard offers a massive deck with covered area, fenced, shrubs, trees, and grassy area for kids or pets. Concrete walkway leads to the oversized single detached garage & private driveway. Excellent location near Westmount Shopping Centre, Medical, Banks, Restaurants, Shops, Schools, Woodcroft Library, & Public Transportation. Minutes from Groat Rd & Downtown.

Built in 1953

### **Essential Information**

MLS® # E4453695

Price \$474,900



Bedrooms	2
Bathrooms	1.00
Full Baths	1
Square Footage	1,088
Acres	0.00
Year Built	1953
Type	Single Family
Sub-Type	Detached Single Family
Style	Bungalow
Status	Active

### **Community Information**

Address	13924 107a Avenue
Area	Edmonton
Subdivision	North Glenora
City	Edmonton
County	ALBERTA
Province	AB
Postal Code	T5M 2A9

### **Amenities**

Amenities	Deck, Patio, Television Connection, Vinyl Windows, See Remarks
Parking Spaces	3
Parking	Over Sized, Single Garage Detached

### **Interior**

Appliances	Dishwasher-Built-In, Dryer, Hood Fan, Refrigerator, Stove-Electric, Washer, Window Coverings
Heating	Forced Air-1, Natural Gas
Fireplace	Yes
Fireplaces	Mantel
Stories	1
Has Basement	Yes
Basement	Full, Partially Finished

### **Exterior**

Exterior	Wood, Stucco
Exterior Features	Back Lane, Fenced, Landscaped, Paved Lane, Playground Nearby, Public Transportation, Schools, Shopping Nearby, Treed Lot

Roof	Asphalt Shingles
Construction	Wood, Stucco
Foundation	Concrete Perimeter

### **School Information**

Elementary	Coronation
Middle	Westmount
High	Ross Sheppard

### **Additional Information**

Date Listed	August 19th, 2025
Days on Market	1
Zoning	Zone 07

DATA IS DEEMED RELIABLE BUT IS NOT GUARANTEED ACCURATE BY THE REALTORS® ASSOCIATION OF EDMONTON. COPYRIGHT 2025 BY THE REALTORS® ASSOCIATION OF EDMONTON. ALL RIGHTS RESERVED. Trademarks are owned or controlled by the Canadian Real Estate Association (CREA) and identify real estate professionals who are members of CREA (REALTOR®, REALTORS®) and/or the quality of services they provide (MLS®, Multiple Listing Service®)

Listing information last updated on August 19th, 2025 at 11:47pm MDT