

\$210,000 - 206 8715 82 Avenue, Edmonton

MLS® #E4453835

\$210,000

2 Bedroom, 2.00 Bathroom, 1,076 sqft

Condo / Townhouse on 0.00 Acres

King Edward Park, Edmonton, AB

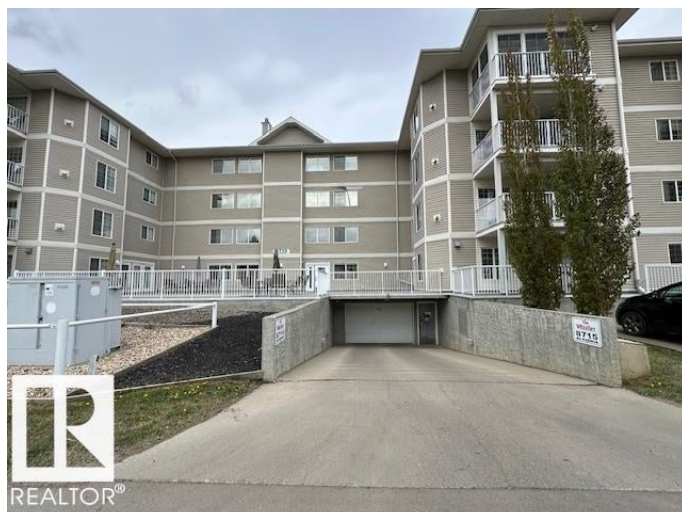
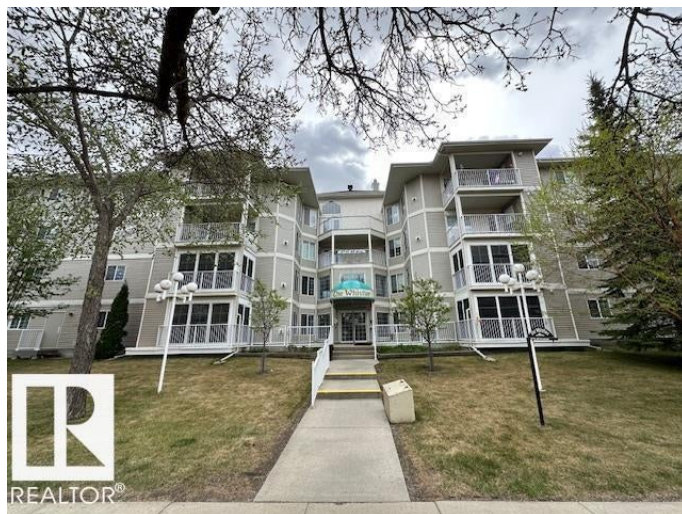
40+ Condo on Whyte Avenue! Well maintained, CORNER UNIT over a 1000 sq/ft in The Whistler, the best kept condo secret on the South Side. In suite laundry. Tons of windows for natural lighting!. Two bedrooms, including huge master with walk-in closet & 3piece ensuite. The second bedroom can be used as a den or home office. Large living room with corner gas fireplace, mantle and tile front, Open concept kitchen with lots of cabinet space. Breakfast bar. Laminate flooring throughout. The four-piece main bath is great for guests. Garden door to your corner patio is perfect for Summer time entertaining.

Fantastic building amenities include: underground parking with storage cage, library, enjoy the amazing out door South facing patio!! Two social rooms and guest suite. Steps to Bonnie Doon shopping mall, Safeway, The new LRT Train, Mill Creek Ravine, public transportation. Minutes to the U OF A!!

Built in 2000

Essential Information

MLS® #	E4453835
Price	\$210,000
Bedrooms	2
Bathrooms	2.00



Full Baths	2
Square Footage	1,076
Acres	0.00
Year Built	2000
Type	Condo / Townhouse
Sub-Type	Lowrise Apartment
Style	Single Level Apartment
Status	Active

Community Information

Address	206 8715 82 Avenue
Area	Edmonton
Subdivision	King Edward Park
City	Edmonton
County	ALBERTA
Province	AB
Postal Code	T6C 4R6

Amenities

Amenities	Detectors Smoke, Intercom, No Animal Home, No Smoking Home, Parking-Visitor, Party Room, Patio, Secured Parking, Security Door, Vinyl Windows, Storage Cage
Parking Spaces	1
Parking	Heated, Single Indoor, Underground

Interior

Interior Features	ensuite bathroom
Appliances	Dishwasher-Built-In, Hood Fan, Refrigerator, Stacked Washer/Dryer, Stove-Electric, Window Coverings
Heating	Forced Air-1, Natural Gas
Fireplace	Yes
Fireplaces	Corner, Mantel
# of Stories	4
Stories	4
Has Basement	Yes
Basement	None, No Basement

Exterior

Exterior	Wood, Vinyl
----------	-------------

Exterior Features	Landscaped, Paved Lane, Picnic Area, Public Transportation, Schools, Shopping Nearby, Ski Hill Nearby
Roof	Asphalt Shingles
Construction	Wood, Vinyl
Foundation	Concrete Perimeter

School Information

Elementary	Donnan School
Middle	St. Kevin School
High	McNally School

Additional Information

Date Listed	August 20th, 2025
Days on Market	1
Zoning	Zone 17
Condo Fee	\$606

DATA IS DEEMED RELIABLE BUT IS NOT GUARANTEED ACCURATE BY THE REALTORS® ASSOCIATION OF EDMONTON. COPYRIGHT 2025 BY THE REALTORS® ASSOCIATION OF EDMONTON. ALL RIGHTS RESERVED. Trademarks are owned or controlled by the Canadian Real Estate Association (CREA) and identify real estate professionals who are members of CREA (REALTOR®, REALTORS®) and/or the quality of services they provide (MLS®, Multiple Listing Service®)

Listing information last updated on August 21st, 2025 at 1:02pm MDT